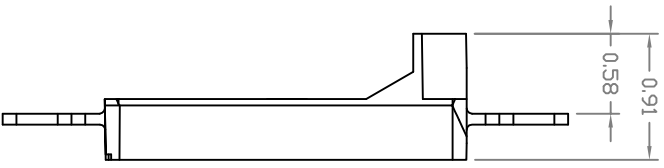
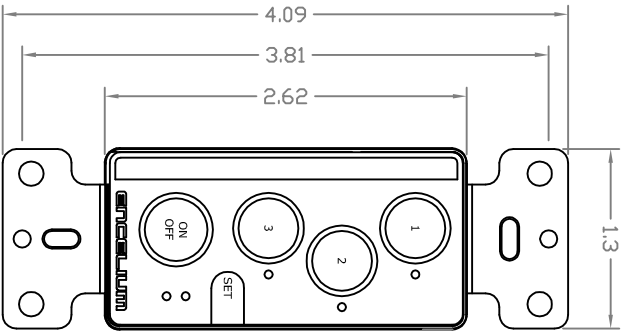


LIGHTING CONTROLLERS

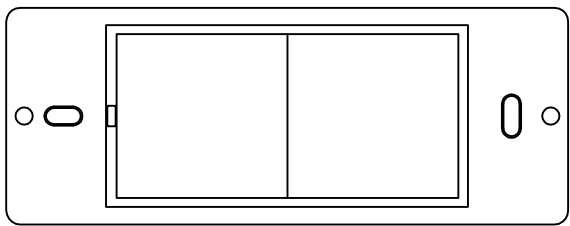
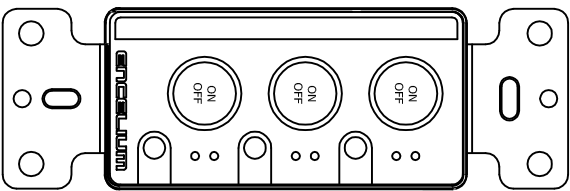
DSC
(Dimming Scene
Controller)



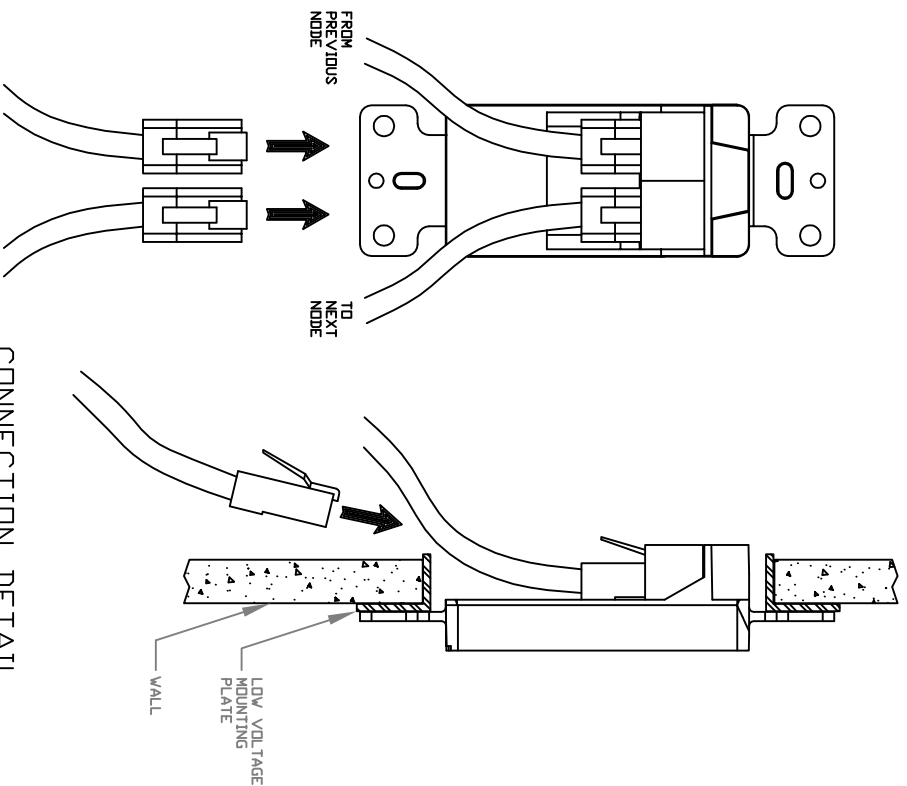
ZC3
(3-Zone
Controller)



MYCDN
(1-Zone
Controller)



- NOTES:
1. INSTALL UNIT IN ACCORDANCE WITH ALL APPLICABLE ELECTRICAL AND BUILDING CODES.
 2. WIRE ONLY WITH CLASS II, LOW VOLTAGE ENCELUM GREENBUS PREFABRICATED CABLE WITH PLENUM (CMP/FT6) FLAME RATING.
 3. DSC/ZC3 & MYCDN MUST BE PROPERLY SECURED ON MOUNTING PLATE.
 4. ENCELUM I/O MODULE NOT REQUIRED FOR INSTALLATION.
 5. DSC/ZC3 & MYCDN CONTAINS NO SERVICEABLE PARTS, REPLACE COMPLETE UNIT ONLY.
 6. REFER TO ENCELUM FIELD COMMISSIONING MANUAL TO CONFIGURE UNIT.
 7. FOR USE WITH DECORATOR STYLE WALLPLATES.



CONNECTION DETAIL
NOT TO SCALE

REV	DESCRIPTION/CHANGE	DATE

		TEL: 905-731-7678 FAX: 905-731-1401 www.enceLUM.com
68 LEEK CRESCENT, UNIT A • RICHMOND HILL, ON L4B 1H1 • CANADA		
TITLE CS-LIGHTING CONTROLLER		

SCALE	NTS	PROJ. NO.	N/A	SIZE	A
DRAWN	A. PARKER	DWG. NO.	77-010-AA	FILE NAME	CS-ZC3-DSC & MYC.dwg
DATE	10-JAN-06				