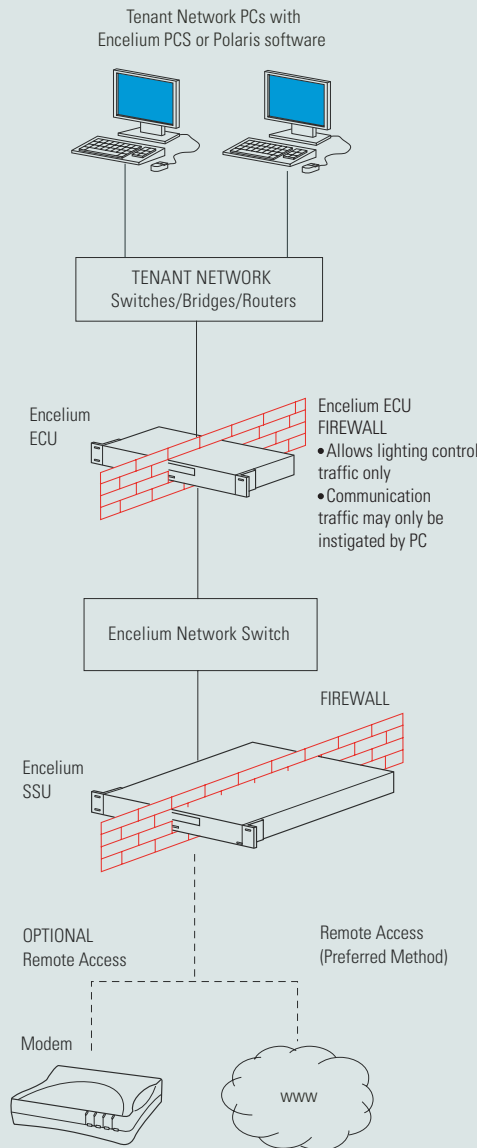




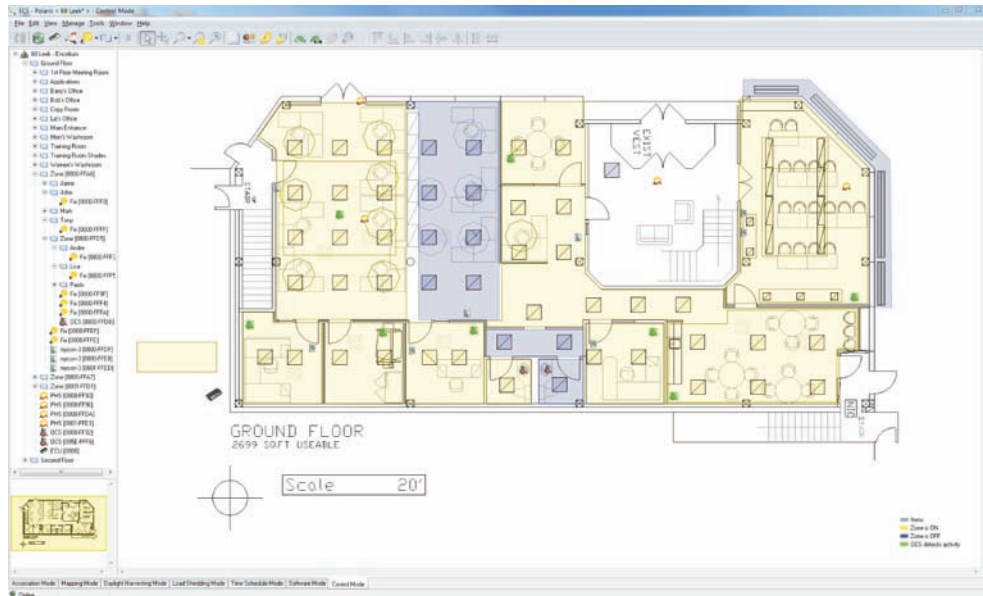
# ENCELIUM

## ENERGY CONTROL SYSTEM SOFTWARE

### ■ POLARIS™ SOFTWARE



Typical networking connections to enable Polaris lighting control. ■



Polaris™ is the central control software application used to commission, configure & manage the Encelium ECS system. It enables configuration of every system parameter in a building (or campus of buildings) for each individual user or space and establishes the baseline settings for the following system features:

- Daylight Harvesting
- Occupancy Control
- Smart Time Scheduling
- Task Tuning
- Personal Control
- Load Shedding

## ■ POLARIS™ SOFTWARE

Polaris™ utilizes a floor plan based interface that permits a user to easily navigate between zones, floors or different buildings and allows a user to zoom in or zoom out of specific areas of a building. Navigation throughout a building can also be done via a zone tree with each zone being labeled according to its use or location. Advanced system features such as creation of zone hierarchies, overlapping and support zone definitions, user access rights, timeout settings for occupancy sensors, calibration of light levels for daylight harvesting and the setting of multiple configured time schedule profiles are controlled through Polaris™. Time scheduling of a control zone is configured through an easy to use interface.

Polaris™ also features a mapping interface which enables convenient “drag and drop” mapping (addressing) of all hardware devices connected to the system such as light fixtures, sensors, relays or lighting controllers. Mapping links the physical location of a device to a defined zone and associated lighting functionality. No pre-assigned addresses are therefore required upon installation of hardware devices making for simple specification and mistake free installation. Similarly changes in the association of a device (such as a sensor or lighting controller) to a grouping of fixtures or zone is done via a simple software setting rather than physical rewiring. In the event of a building reconfiguration or renovation, updated floor plans are easily imported from AutoCAD.

As building lighting requirements and operating characteristics change over time, Polaris™ is used to reconfigure system settings to ensure optimum lighting and energy management performance. Interfaces to other building automation systems utilizing standard protocols such as BACnet® is also set-up within Polaris™.

### SYSTEM REQUIREMENTS (POLARIS™)

- Operating System: Microsoft Windows XP/Vista
- Min. 100 MB hard drive space
- Min. 256 MB RAM
- Network connection with access to a network-enabled Encelium ECU

Specifications subject to change without notice.

**Cat.# SWL-600**

# ENCELIUM

**CORPORATE HEAD OFFICE**  
500 Frank W. Burr Boulevard  
Floor 1, Suite 29  
Teaneck, NJ 07666 U.S.A.  
Tel. 1.201.928.2400  
Tel. 1.201.928.4028

**CANADIAN OFFICE**  
68 Leek Crescent - Unit A  
Richmond Hill, ON L4B 1H1  
CANADA  
Tel. 1.905.731.7678  
Tel. 1.905.731.1401

**TECHNICAL SUPPORT**  
1.888.531.7573

**EMAIL** [technicalsupport@encelium.com](mailto:technicalsupport@encelium.com)  
**WEB** [www.encelium.com/technicalsupport](http://www.encelium.com/technicalsupport)