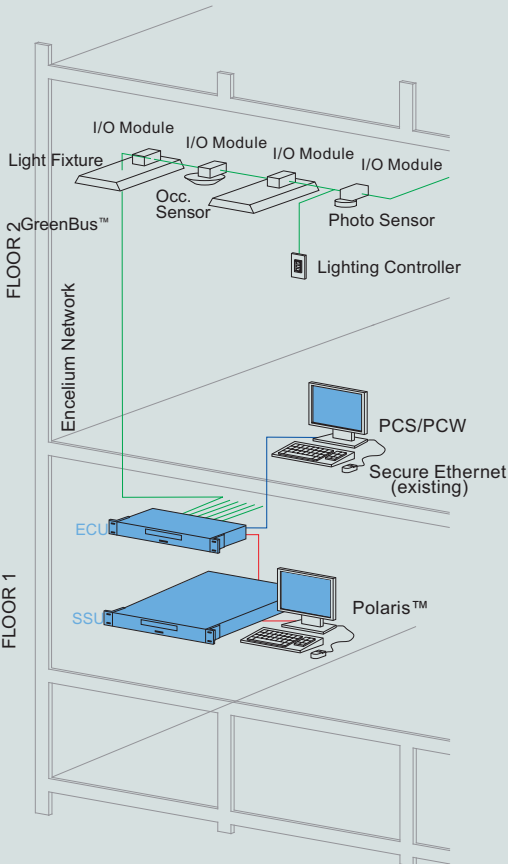
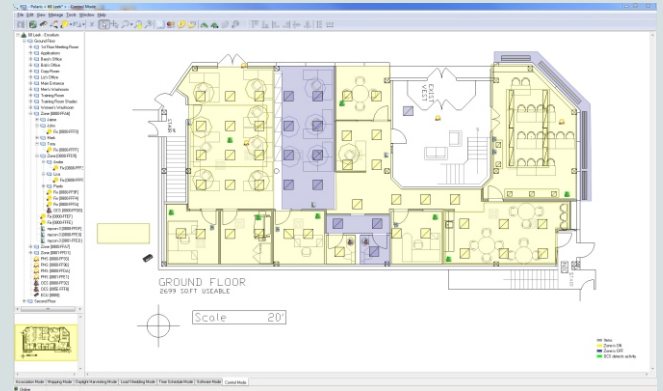




ENCELIUM

ENERGY CONTROL SYSTEM



SYSTEM ARCHITECTURE

This illustration shows how each component is easily integrated into the Encelium Energy Control Lite System. Each light fixture, sensor and lighting controller is daisy-chained back to the Energy Control Unit (ECU) using prefabricated 'click & go' GreenBus™ communication cabling. ECUs typically control individual floors and are linked via an Ethernet Network. Internet or LAN connection allows Windows floor plan based control software to be operated anywhere on the network. For reference, the component shown on this data sheet is highlighted. ■

■ ECS LITE BUNDLE

For applications requiring 300 nodes or less, ECS Lite is a lower cost bundled package of Encelium's base hardware and software components that make up Encelium's Energy Control System (ECS). ECS Lite is ideal for smaller projects with limited node counts or for applications that predominantly involve circuit level controls through Encelium's relay panels or relay modules. This bundle will include one of each of the following Encelium components:

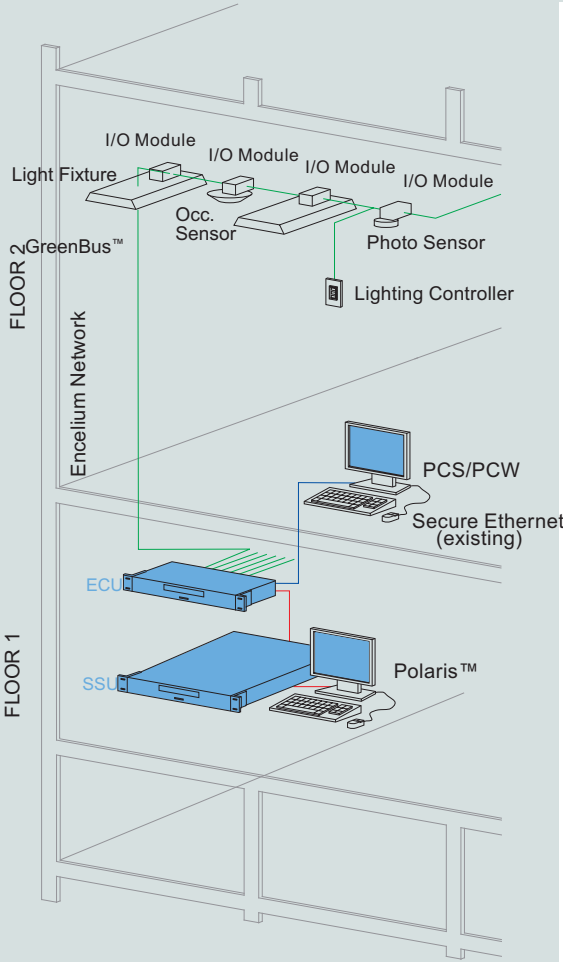
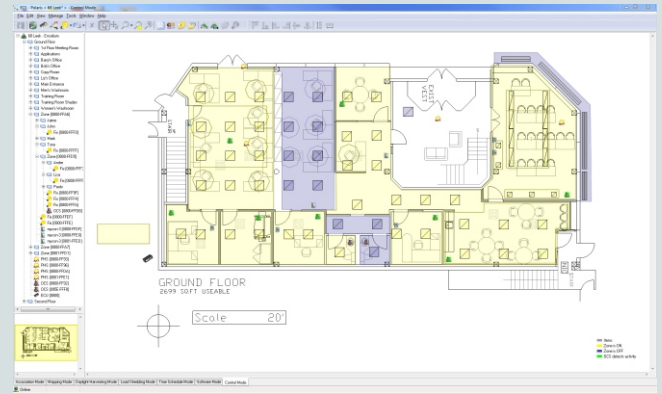
ECS-300 - ENERGY CONTROL UNIT

Encelium's standard ECU lighting control device that collects, processes and distributes lighting control information to Encelium I/O modules and wall controllers over Encelium's GreenBus™ network. (Please refer to ECU-100 technical data sheet for additional features and specifications)

ECS-300 - SYSTEM SUPPORT UNIT

A customized version of Encelium's SSU database server exclusive to ECS LITE systems. The ECS-300 SSU stores all system settings and parameters, including attributes for zones, fixtures, sensors, zone controllers and scene controllers but is limited to 300 nodes or less. Additionally, it maintains multiple set-points, including those for light levels, time schedules, occupancy sensor timeouts and demand response or load shedding features. (Please refer to the SSU-200 technical data sheet for additional features and specifications)

Note: Encelium relay panels and relay modules are considered as single nodes under the ECS LITE system architecture regardless of the number of relays controlled.



SYSTEM ARCHITECTURE

This illustration shows how each component is easily integrated into the Encelium Energy Control Lite System. Each light fixture, sensor and lighting controller is daisy-chained back to the Energy Control Unit (ECU) using prefabricated 'click & go' GreenBus™ communication cabling. ECUs typically control individual floors and are linked via an Ethernet Network. Internet or LAN connection allows Windows floor plan based control software to be operated anywhere on the network. For reference, the component shown on this data sheet is highlighted. ■

ECS-300 - SOFTWARE BUNDLE

Customized versions of Encelium's Polaris™ and Personal Control (PCS) software applications are exclusive to ECS LITE systems. Polaris is the central control software application used to commission, configure & manage the Encelium ECS system. PCS is an application which enables individuals in a building to control lighting levels in their workspace from their own desktop PC. No advanced energy reporting features are available with the ECS-300 Software Bundle. (Please refer to the Polaris and Personal Control Software technical data sheets (SWL-600) for additional features and specifications).

ORDERING INFORMATION

The ECS-300 hardware and software components referenced above can only be ordered as a bundled package referencing **Cat. # ECS-300**. The ECS LITE system components will work only with other ECS LITE components and cannot be combined with other devices not from this product family. Standard IO modules, Greenbus cable, wall controllers and all other peripheral software applications such as the BACnet IP and Niagara AX interfaces are compatible with this system.

Cat. # ECS-300



CORPORATE HEAD OFFICE
 500 Frank W. Burr Boulevard
 Floor 1, Suite 29
 Teaneck, NJ 07666 U.S.A.
 Tel. 1.201.928.2400
 Fax. 1.201.928.4028

CANADIAN OFFICE
 68 Leek Crescent - Unit A
 Richmond Hill, ON L4B 1H1
 CANADA
 Tel. 1.905.731.7678
 Fax. 1.905.731.1401

TECHNICAL SUPPORT
 1.888.531.7573

EMAIL technicalsupport@encelium.com
WEB www.encelium.com/technicalsupport